

# BULK SOLIDS HANDLING EQUIPMENT

## FLOW AIDS

### Aeration Pads I100 Series

I100 is mainly used for air flow aids preventive measures. In the hopper or silo discharge process, if an internal periodic blowing air flow state of the material will in most materials ideal

## Aeration Pads I100

### Function

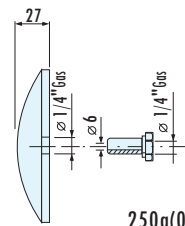
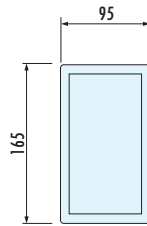
- Working pressure: 0.2 bar (2.9PSI)
- Working temperature: -20 ~ +80 °C (-4 to 180° F)
- convex shape, the air emitted from the white surface of the larger transmission
- Suitable for cement, lime and powdered materials related.
- outlet softer materials to avoid possible bypass, holes, separation agglomeration, etc.



### Aeration pads

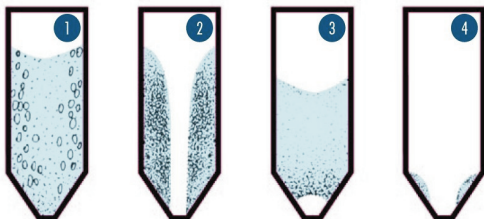
0.2bar(2.9PSI)

0.12m<sup>3</sup>/h(0.07cfm)

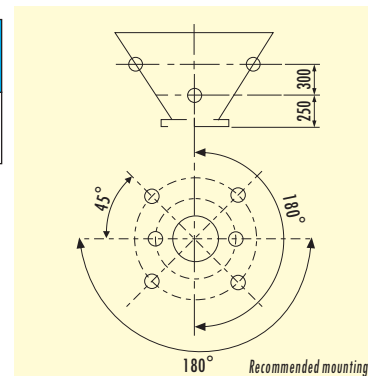


250g(0.55lb)

Type	Operating Pressure	Air consumption	Weight
I100	0.2bar(2.9PSI)	0.12m <sup>3</sup> /h(0.07cfm)	250g



- 1) Segregation
- 2) Rat Holing
- 3) Bridging
- 4) Residues



The work broken arch recommended intermittent operation, such as using open 2-3 seconds, stop for 10-15 seconds, different pressures and under different working intermittently broken arch device will produce different effects of aid flows.

Dimensions in mm